

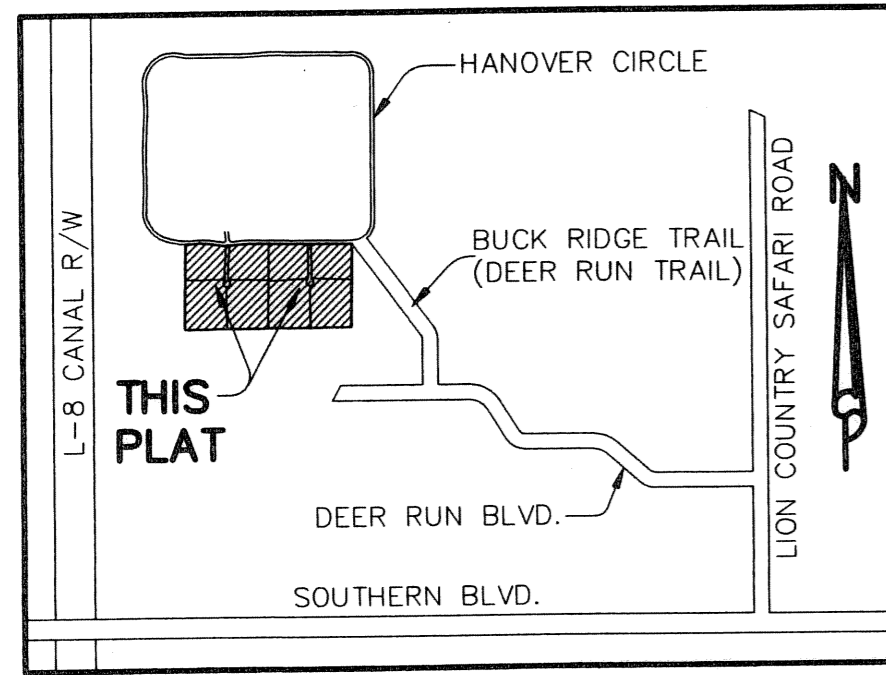
"WHITE FENCES EQUESTRIAN ESTATES" RE-PLAT NO. 2

165

BEING A REPLAT OF LOTS 9, 10, 11, AND 12, "WHITE FENCES EQUESTRIAN ESTATES" AS RECORDED IN PLAT BOOK 85, PAGES 175 THROUGH 177 OF THE PUBLIC RECORDS OF PALM BEACH COUNTY, FLORIDA, LYING IN SECTION 16, TOWNSHIP 43 SOUTH, RANGE 40 EAST PALM BEACH COUNTY COUNTY, FLORIDA

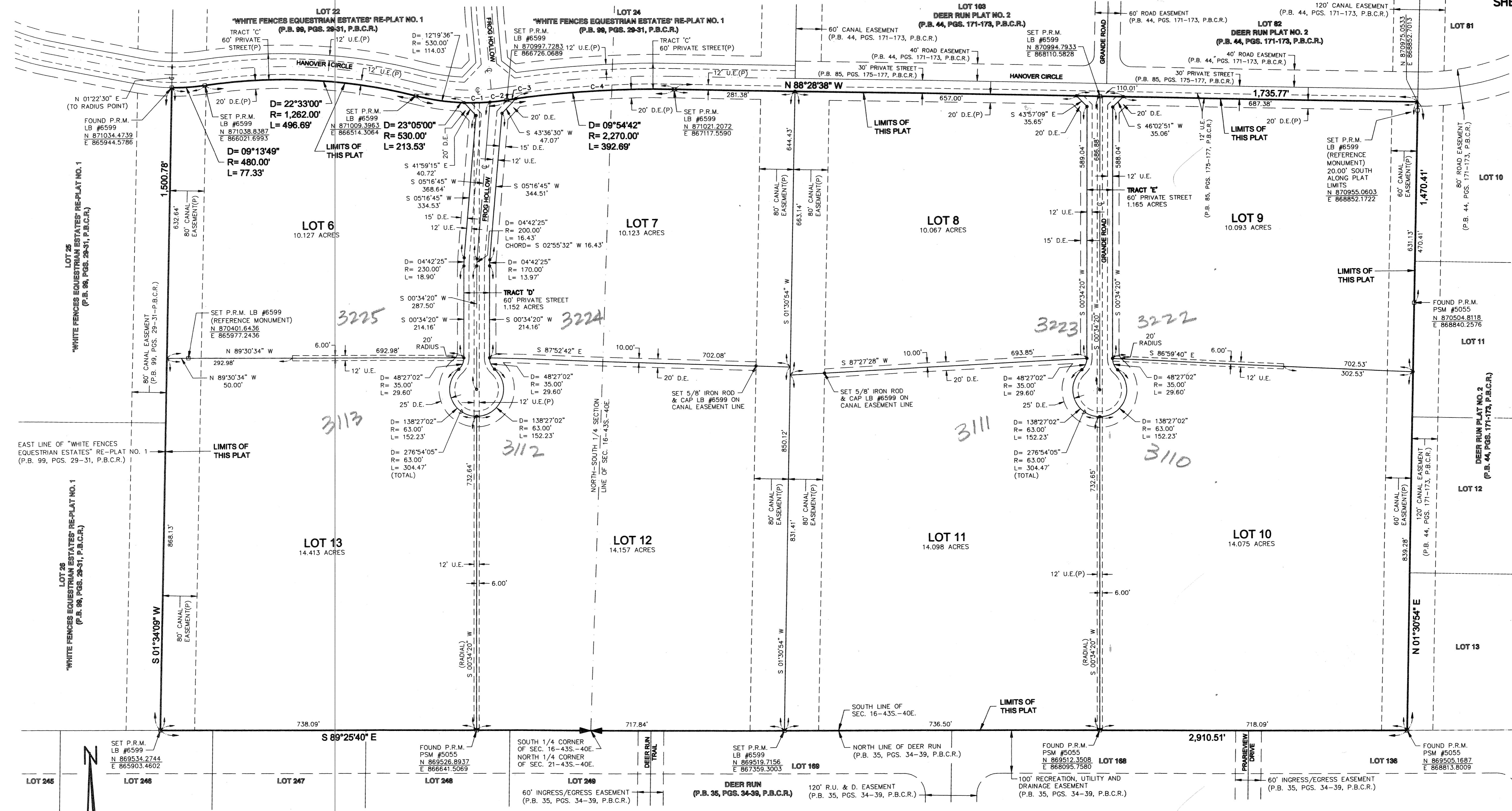
STATE OF FLORIDA)
COUNTY OF PALM BEACH) S.S.

THIS INSTRUMENT WAS FILED FOR RECORD AT _____ M.
THIS _____ DAY OF _____ 20____ AND DULY RECORDED IN: PLAT BOOK _____ ON PAGE _____ SHARON T. BOK CLERK CIRCUIT COURT.
BY: _____ DEPUTY CLERK.

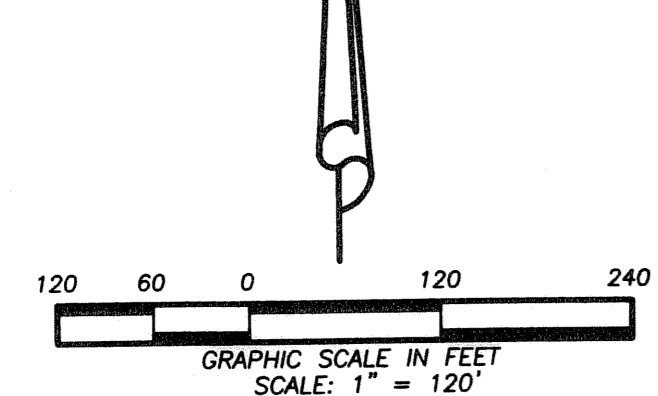


CURVE TABLE			
C-1	D= 06°31'03"	R= 530.00'	L= 60.29'
C-2	D= 04°14'21"	R= 530.00'	L= 39.21'
C-3	D= 00°32'21"	R= 2,270.00'	L= 21.36'
C-4	D= 09°22'21"	R= 2,270.00'	L= 371.33'

SHEET 2 OF 2



SUBDIVISION WHITE FENCES EQUESTRIAN ESTATES RE-PLAT No 2
BOOK 104 PAGE 165
FLOOD MAP # 50 B
ZONING AR
SE
TAX 1056
FUD NAME



LEGEND

CHD. = CHORD
D = CENTRAL ANGLE
D.E. = DRAINAGE EASEMENT
L = ARC LENGTH
LB# = LICENSED BUSINESS NUMBER
N/D = NAIL AND DISC

NR = NON-RADIAL
O.R.B. = OFFICIAL RECORD BOOK
P.R.M. = PERMANENT REFERENCE MONUMENT
P.B. = PLAT BOOK
P.B.C.R. = PALM BEACH COUNTY RECORDS
PG. = PAGE(S)

(P) = PER THE PLAT OF "WHITE FENCES EQUESTRIAN ESTATES" AS RECORDED IN PLAT BOOK 85, PAGES 175-177, P.B.C.R.
R = RADIUS
R/W = RIGHT OF WAY

SEC. = SECTION
U.E. = UTILITY EASEMENT
CL = CENTERLINE

THIS INSTRUMENT WAS PREPARED BY:
David A. Bower, P.S.M. #5888 in the offices of
Dennis J. Leavy and Associates, Inc.
460 Business Park Way, Suite D
Royal Palm Beach, Florida 33411
(561) 753 - 0650

DENNIS J. LEAVY & ASSOCIATES, INC.
LAND SURVEYORS AND MAPPERS

460 BUSINESS PARK WAY • SUITE D • ROYAL PALM BEACH, FL • 33411
PHONE: (561) 753-0650 FAX: (561) 753-0290

SCALE: 1" = 120' CHECKED BY: D.J.L. DATE: 02/24/04
DRAWN BY: D.A.B. JOB NO.: 03-072-01